

DATE: _____
 COMPANY: _____
 JOB NAME: _____
 SUBMITTED BY: _____
 NOTES: _____

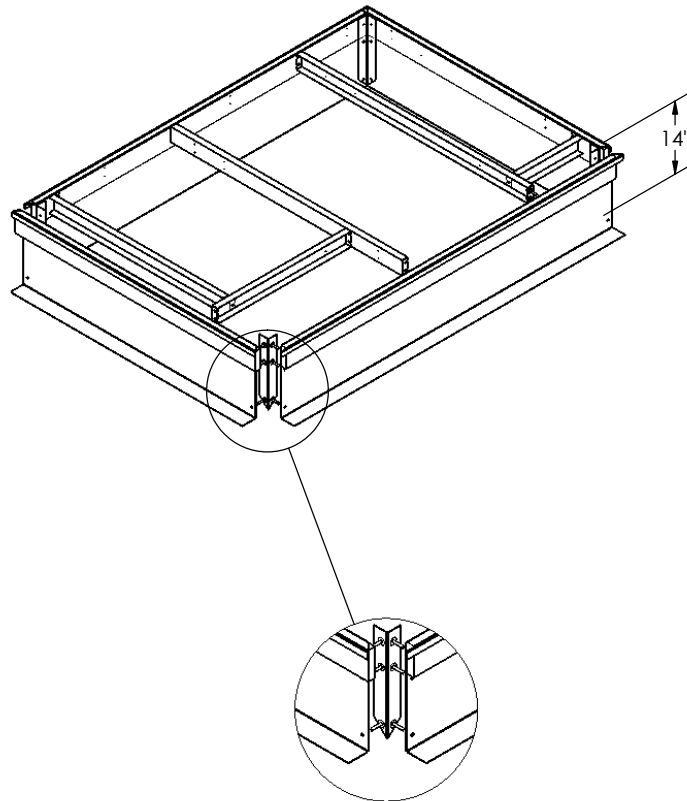
ROOF CURB SUBMITTAL #1014639

AAON RN09-15 ("B" CAB)
 CURB ASSEMBLY NUMBER
 1014639

Drawn By: RTO
 Drawn Date: 6/01/09

REV:

ESTIMATED WEIGHT: 116 LBS.



DETAIL A

FEATURES:

MITERED TOP CORNERS

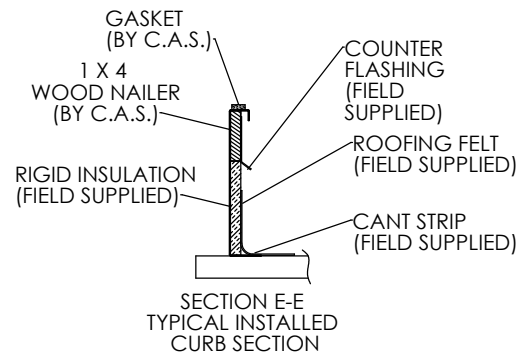
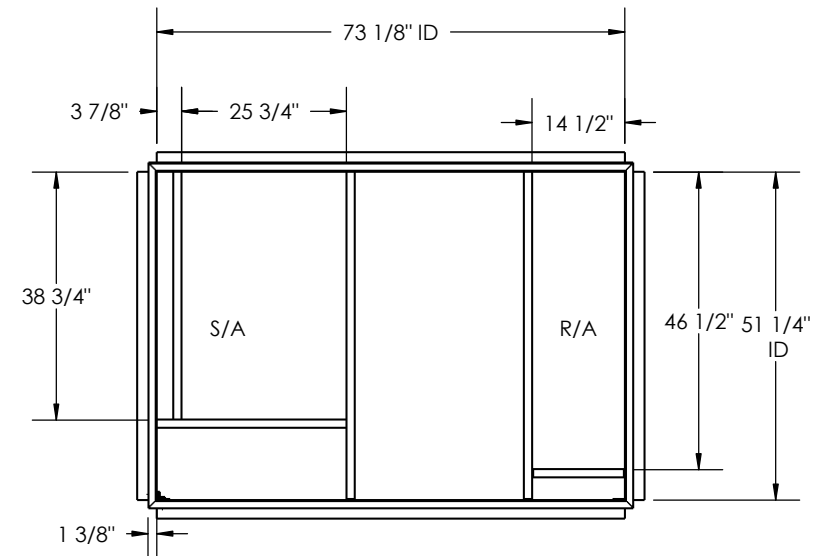
ROOF CURB BODY IS FABRICATED OF HEAVY GAUGE GALVANIZED STEEL.

FULL PERIMETER WOOD NAILER.

GASKETING PROVIDED FOR UNIT TO CURB SEALING.

PRE-PUNCHED ASSEMBLY HOLES AND HARDWARE INCLUDED FOR DUCT SUPPORT INSTALLATION,

ROOF CURB IS SHIPPED KNOCKED DOWN.



ROOF CURB IS LABELED WITH RTU# IF APPLICABLE

© 2007 COX ENGINEERING COMPANY
 DBA CAMBRIDGEPORT AIR SYSTEMS. ALL RIGHTS RESERVED TM

Cambridgeport
 AIR SYSTEMS, INC.

SALISBURY, MA 01952

PHONE 1-800-648-2872 FAX 1978-462-9189